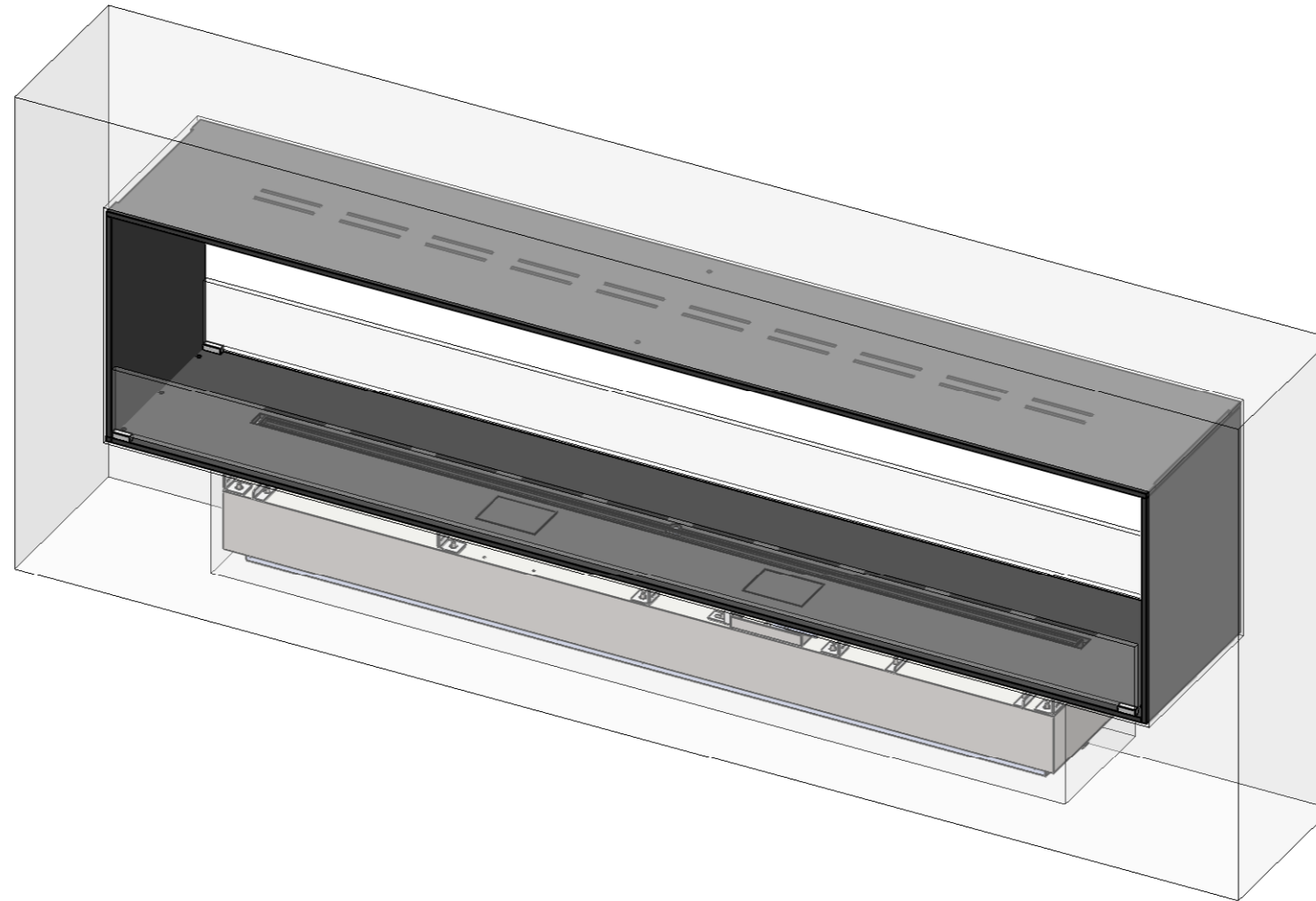



decoflame® Montreal e-Ribbon, open to front and back, Black

SAMPLE DRAWING, BESPOKE SIZE OPTIONS

two 110mm high glass screens
 Touch Screen, Remote Control, Bluetooth / App and six step flame level including ECO wave
 with RS232 Connection for smart home systems
 TV temperature sensor

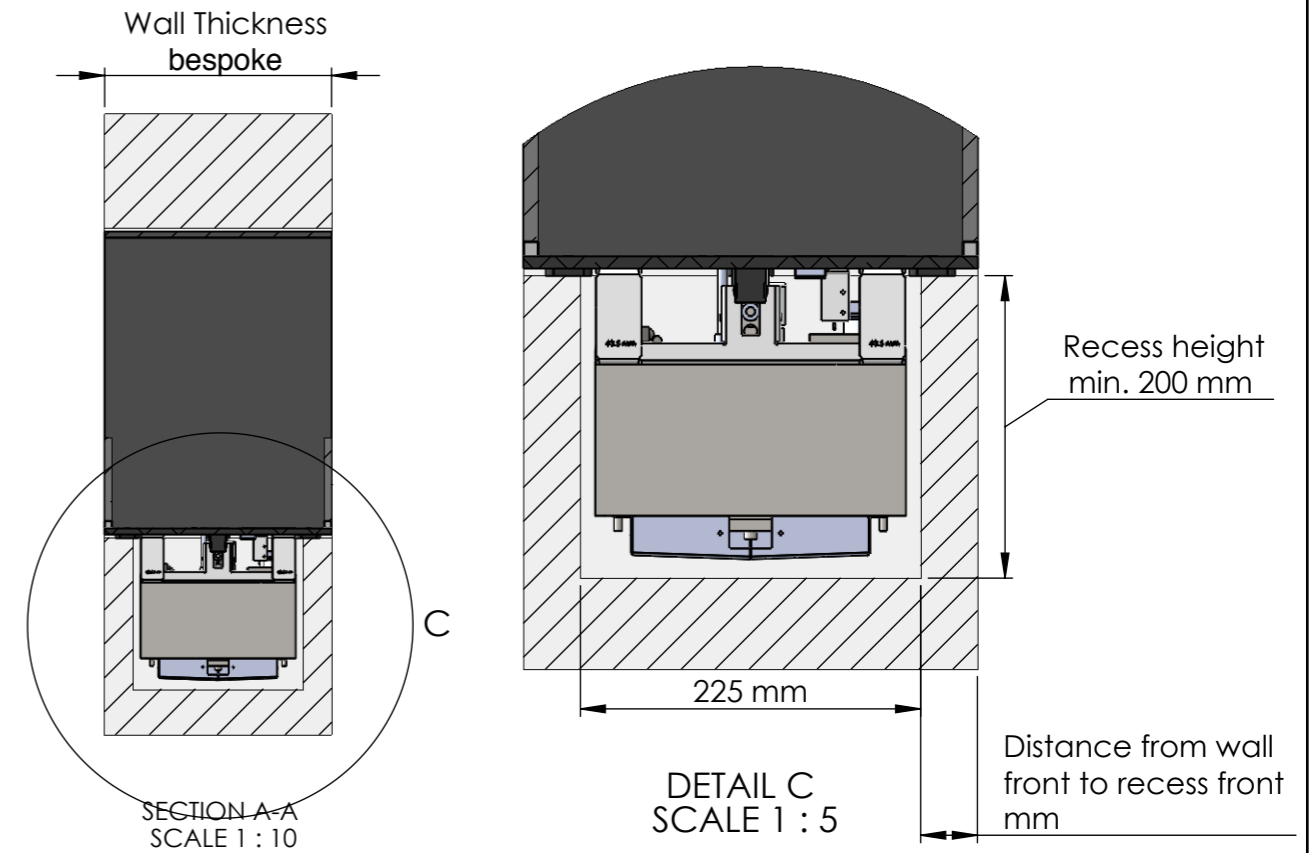


Dimensions are in millimeters		 DecoFlame ApS Stenholm 14 DK-9400 Nørresundby	SCALE: 1:10
MATERIAL:			FORMAT: A3
WEIGHT:	kg	Order Number:	SHEET 1 OF 4
REVISION:	2		
Copyright of DecoFlame ApS Denmark, whose property this document remains. No part thereof may be disclosed, copied, duplicated or in any other way made use of, except with the approval of DecoFlame ApS Denmark.		DWG NO.	

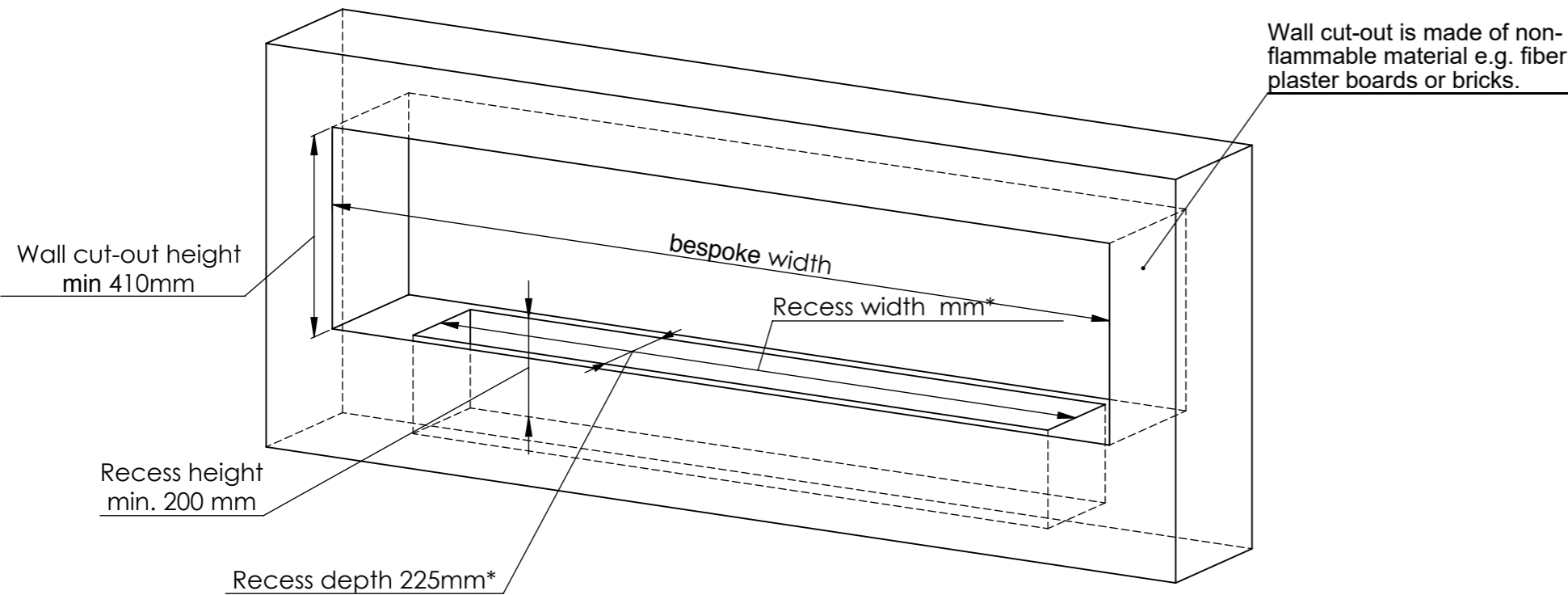
Montreal - open to front and back



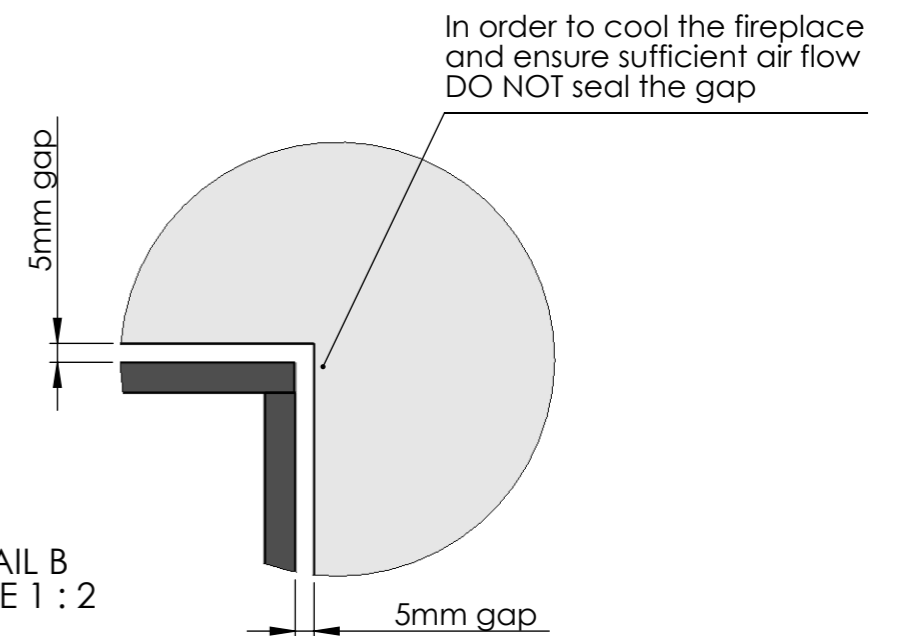
Electricity Supply
 The decoflame® e-Ribbon Fire needs to be connected to the mains.
 Make sure there is a power socket for 230V - 50 Hz installed inside the wall cut-out.



Wall cut-out dimensions

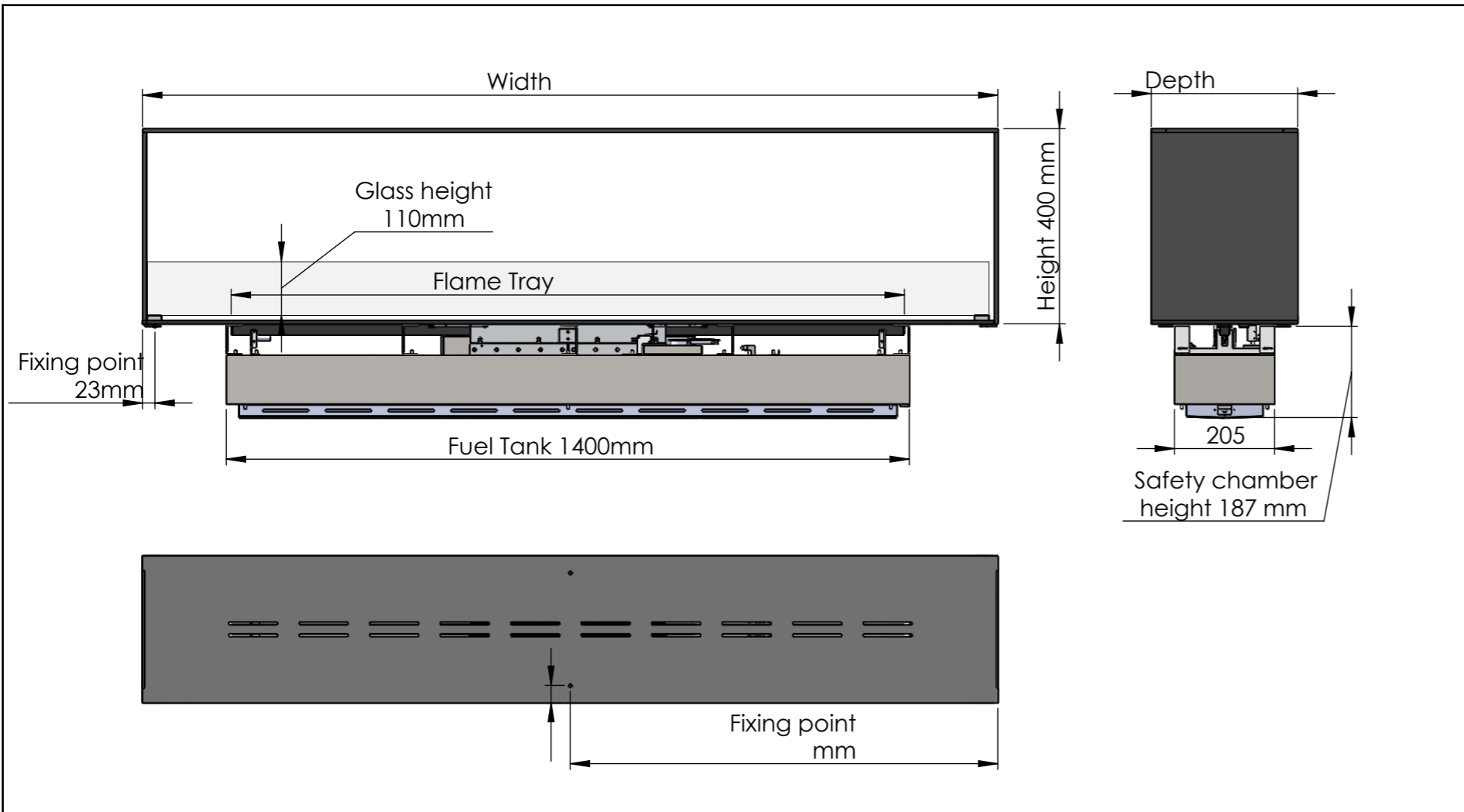


* The recess is centered in the bottom of the cut-out.



DETAIL B
 SCALE 1:2

Dimensions are in millimeters		 Decoflame ApS Stenholm 14	SCALE: 1:12
MATERIAL:			FORMAT: A3
WEIGHT:		Order Number:	SHEET 2 OF 4
REVISION:			
Copyright of Decoflame ApS Denmark, whose property this document remains. No part thereof may be disclosed, copied, duplicated or in any other way made use of, except with the approval of Decoflame ApS Denmark.		DWG NO.	Montreal - open to front and back



General Installation Guidelines for "decoflame® made to measure fireplaces", open to two sides:

It is essential to maintain a 5mm gap all the way around the fireplace (Cut-out = Fireplace Dimensions + 10mm) This gap must not be sealed.

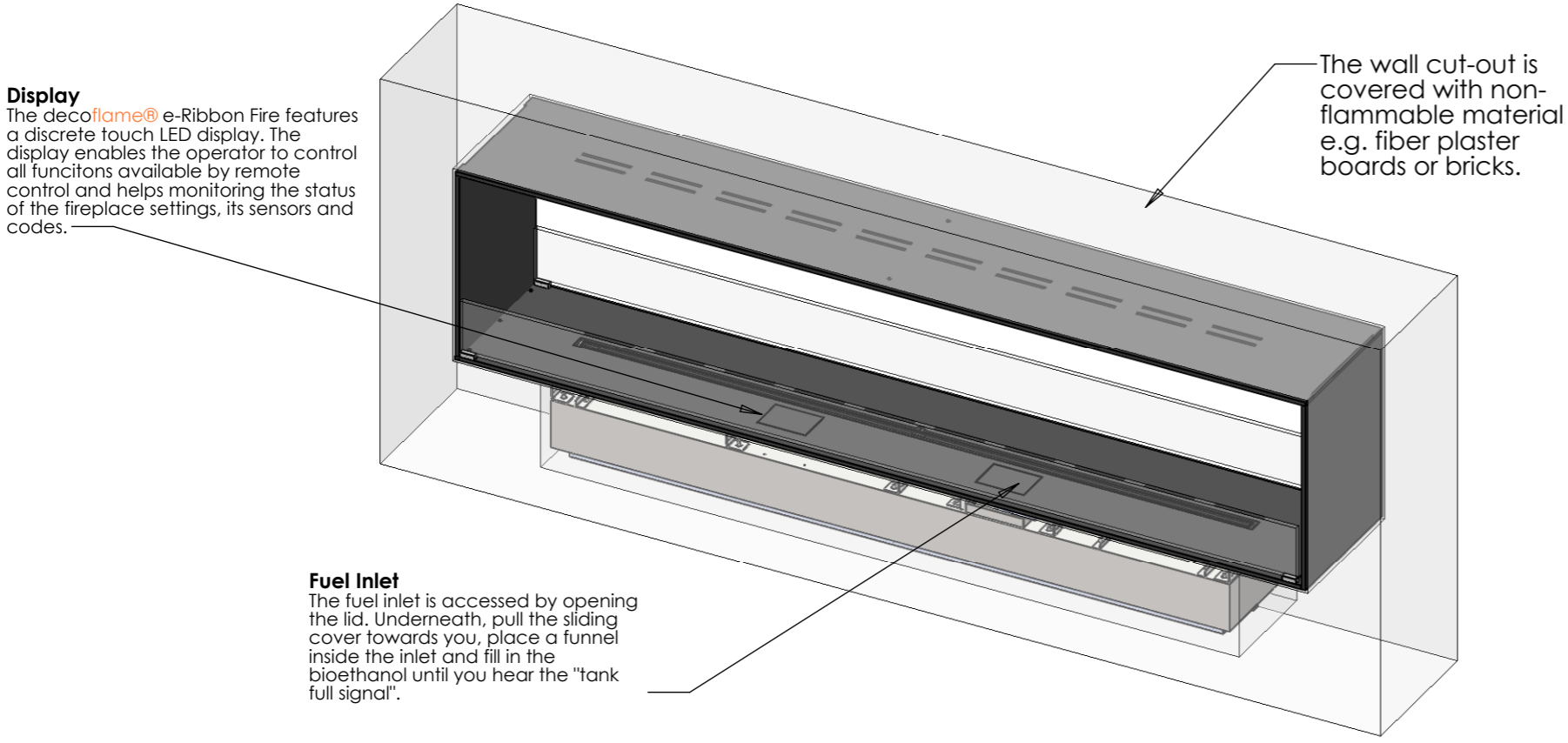
As the edges of the cut-out remain visible it is important that they are done to the highest possible finish. All four corners of the cut out must have exactly a 90 degree angle.

Plasterboard walls - Stud-walls
All surfaces inside the wall cut-out are to be covered with fibre plaster sheets or other non-inflammable materials.

Stone/Brick walls
The cut-out is made according to the attached drawing.

Important
Make sure to create a closed cavity for the section below the base plate of the fire and above the roof of the fireplace.

Installation process



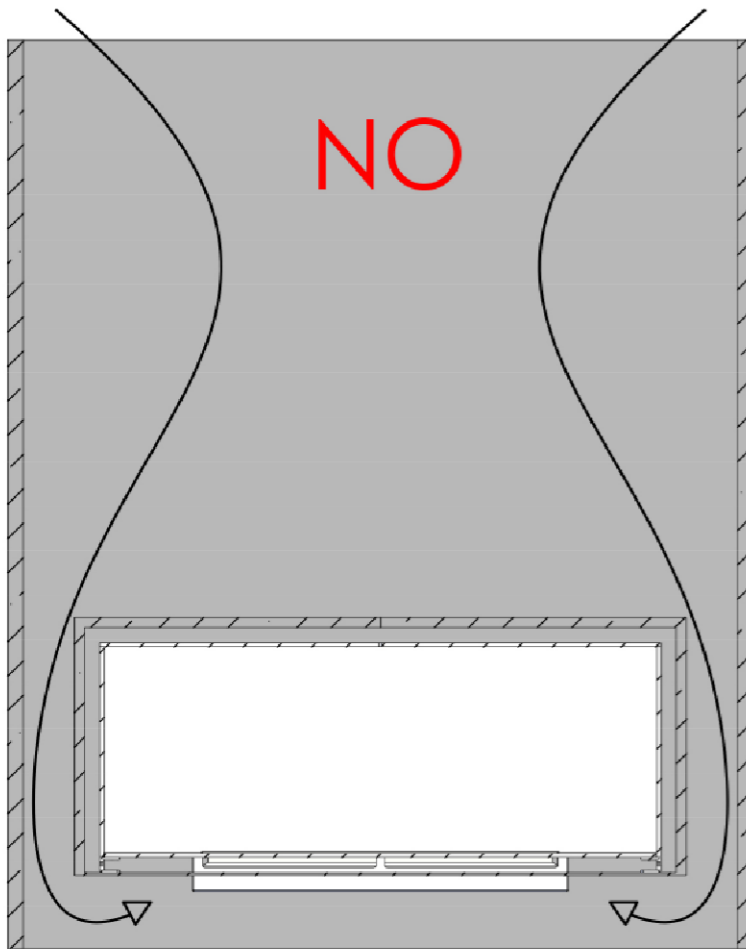
Exploded view showing the installation process.

1. The body of the fireplace is centered in the wall cut out.
2. Connect the fireplace to power the socket and lower the baseplate with fireplace into the wall recess.
3. Secure the fireplace with the included fasteners. Depending on type the of wall use suited wall plugs.
4. Carefully place the glass on the glass pins.

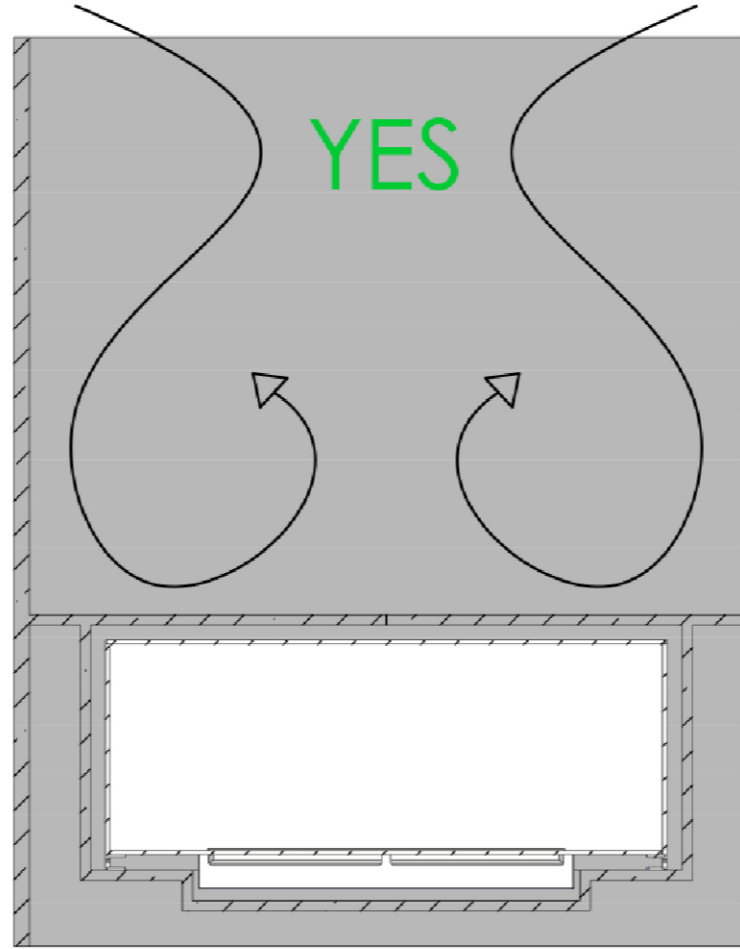
Dimensions are in millimeters	 DecoFlame ApS Stenholm 14 <small>CO2 og erstatning til biogas</small>	SCALE: 1:10
MATERIAL:		FORMAT: A3
WEIGHT:	Order Number:	SHEET 3 OF 4
REVISION:		
Copyright of DecoFlame ApS Denmark, whose property this document remains. No part thereof may be disclosed, copied, duplicated or in any other way made use of, except with the approval of DecoFlame ApS Denmark.	DWG NO.	Montreal - open to front and back

IMPORTANT INFORMATION

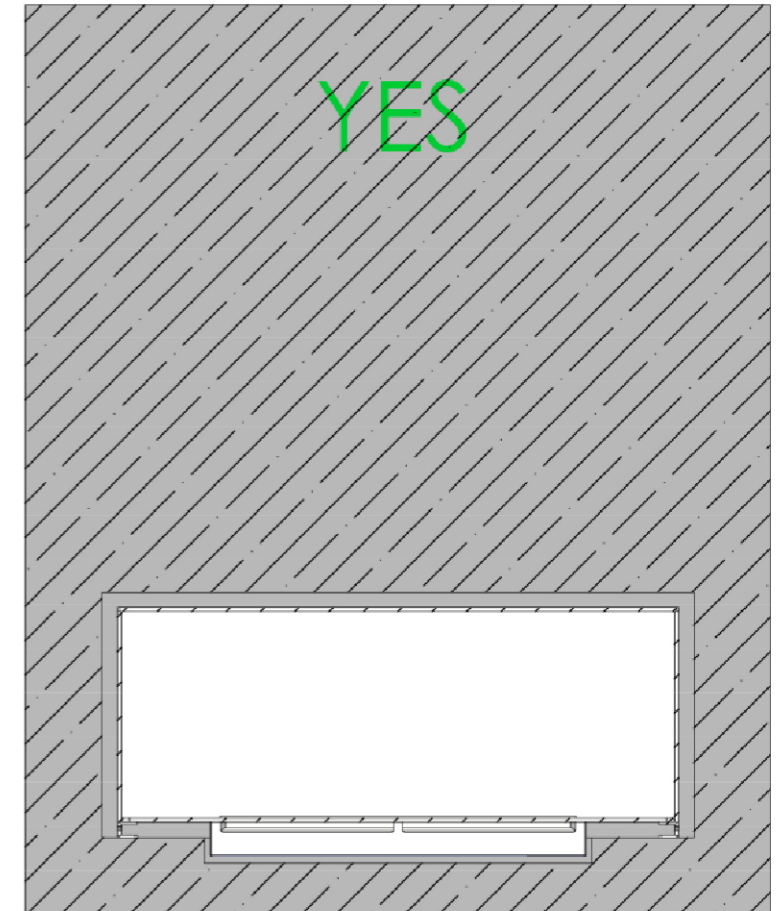
Particulars of the wall in which the fireplace shall be installed



DO NOT! install the fireplace in a wall construction which is open above and below the fireplace. The warm air will cause turbulences inside this hollow construction which will have a negative impact on the flames.



DO! install the fireplace in an open-wall construction, which is closed above and below the fireplace. Make sure to create a closed cavity for the section below the base plate of the fire.



DO! install the fireplace in a massive wall (made of bricks, stone or gas beton) using the wall cut-out dimensions mentioned on the previous page.

Dimensions are in millimeters		 decoflame <small>Order and installation for fireplace</small>	SCALE: 1:10
MATERIAL:			FORMAT: A3
WEIGHT:		Order Number:	SHEET 4 OF 4
REVISION:			
Copyright of Decoflame ApS Denmark, whose property this document remains. No part thereof may be disclosed, copied, duplicated or in any other way made use of, except with the approval of Decoflame ApS Denmark.		DWG NO.	Montreal e-Ribbon Fire